

# 13

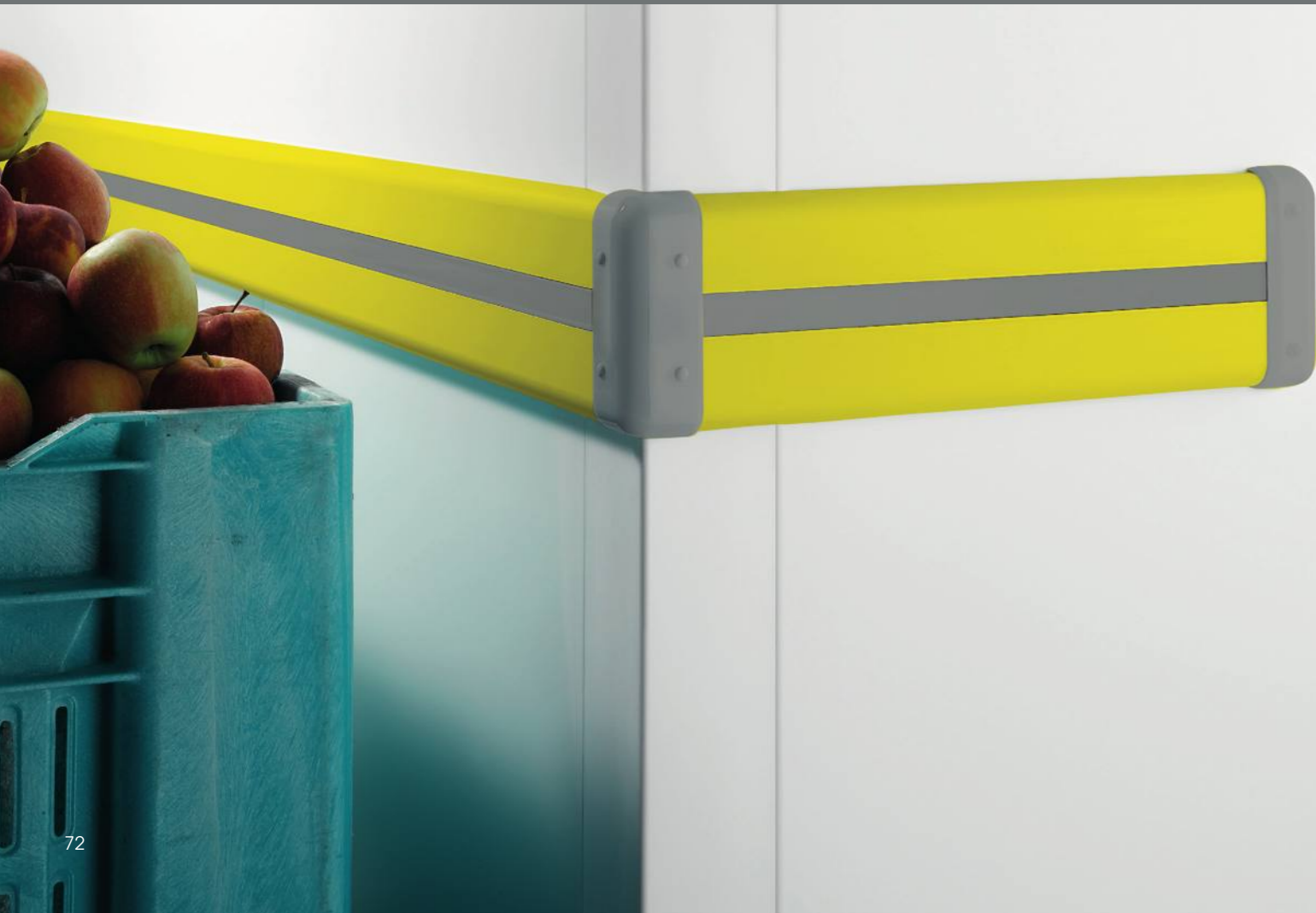
## WALL PROTECTION

New bumper without guides. Thanks to its big size and resistance it is ideal for protection of industrial spaces. Fixed caps with hidden screws covered by specific buttons.

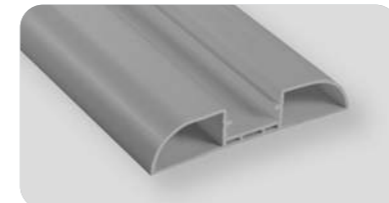
Nuovo profilo antiurto senza guida. La sua ampiezza e resistenza lo rende ideale per la protezione di ambienti industriali. Terminali fissati con viti nascoste da appositi bottoni.

Nouveau profilé anti-choc sans besoin d'une base à fixer. Sa mesure large et sa résistance en font le profilé parfait pour la protection des espaces industriels. Embouts fixés avec des vis cachées grâce à des bouchons spécifiques.

Nuevo perfil antigolpe sin guía. Su amplitud y resistencia lo hacen ideal para la protección de entornos industriales. Terminales fijados con tornillos ocultos por botones especiales.

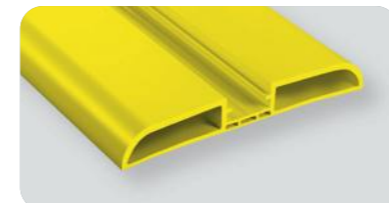
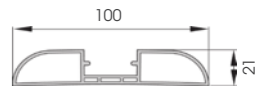


### Wall Protection



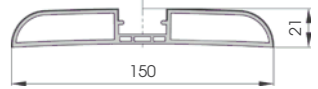
**WP 100**

Length **4.000 mm**  
Packing **8 pz / box**  
Colour **B E F**



**WP 150**

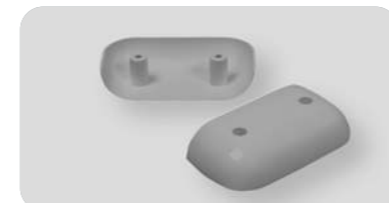
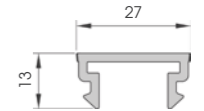
Length **4.000 mm**  
Packing **4 pz / box**  
Colour **B M E**



**WPC**

To install with WP 100 / WP 150

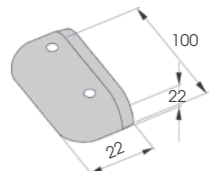
Length **4.000 mm**  
Packing **16 pz / box**  
Colour **A B M D E F G H**



**WPT 100**

To install with TM5

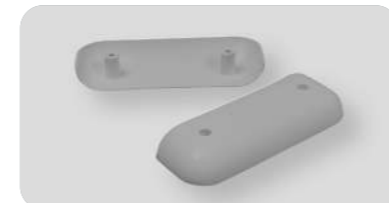
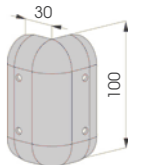
Packing **50 pz / box**  
Colour **B E F**



**WPA 100**

To install with TS9

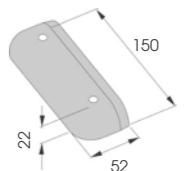
Packing **20 pz / box**  
Colour **B E**



**WPT 150**

To install with TM5

Packing **50 pz / box**  
Colour **B E**



**WPA 150**

To install with TS9

Packing **20 pz / box**  
Colour **B E**

